

PULLENVALE STATE SCHOOL

NAPLAN PRELIMINARY DATA PRINCIPAL EXECUTIVE SUMMARY 2017

Parents and community members of Pullenvale State School.

NAPLAN preliminary data for assessments of students who participated in Year 3 and Year 5 2017 has now been released.

In 2017, NAPLAN celebrates its tenth year of National Assessment. As a school, we draw many conclusions on longitudinal studies of data reflecting growth in performance. In my opinion, Pullenvale has significant reason to celebrate. Our NAPLAN academic performance throughout the 10-year period shows continual growth.

Data is a very powerful form of evidence in any business to make evidence based decisions, education is no different. I reflect on my role as a Business Analyst, many years ago, which assists me in identifying the broader implications of our data. The analysis of our longitudinal data, together with other wide ranging data sets, has directed the schools' strategic plan 2017-2021.

As a school, we are also interested in the data sets relating to student and community engagement and well-being. NAPLAN plays a role alongside this suite of comparative datasets in strategically informing our decision making. It is very important that we see NAPLAN results as one piece of a whole set of data and triangulate consistently.

For the students and families:

In terms of the real meaning of NAPLAN data, we need to be mindful when looking at gross figures to interpret how **your child** is performing. Student individual NAPLAN result booklets will be distributed this week.

On the tables below you will see preliminary data analysis for Year 3 and Year 5.

Year 3

Band 1: Below National Minimum Standard

Band 2: At or within National Minimum Standard (Raw and Mean Scale Score will impact the phase 'within')

Band 3 & 4: Above or within National Minimum Standard range

Band 5 & 6: Known as Upper-Two Bands (performing well above comparative Nation Standard)

	Band 6	Band 5	Band 4	Band 3	Band 2 (NMS)	Band 1
Reading	35%	39%	17%	7%	2%	0%
Writing	24%	56%	15%	5%	0%	0%
Spelling	44%	26%	24%	4%	2%	0%
G & P	61%	28%	7%	4%	0%	0%
Numeracy	33%	31%	29%	5%	2%	0%

Year 5

Band 3: Below National Minimum Standard

Band 4: At or within National Minimum Standard (Raw and Mean Scale Score will impact the phase 'within')

Band 5 & 6: Above or within National Minimum Standard range

Band 7 & 8: Known as Upper-Two Bands (performing well above comparative Nation Standard)

	Band 8	Band 7	Band 6	Band 5	Band 4 (NMS)	Band 3
Reading	39%	28%	28%	5%	0%	0%
Writing	11%	13%	33%	37%	5%	1%
Spelling	23%	27%	38%	11%	1%	0%
G & P	44%	17%	25%	3%	11%	0%
Numeracy	27%	28%	31%	13%	1%	0%

Note: Data presented is preliminary only. Variation may be possible after final data release

Academic Achievement Trends:

The following graphs indicate the growth of student performance in all 5 NAPLAN Assessments Comparatively in Year 3 and Year 5, from 2008 through to and including 2016, represented in Mean Scale Score (MSS).

MSS data for 2017 is not ready for final publication. Once prepared, this will be shared in similar graphical form.

Early indications suggest 'like' and 'above' academic trends of growth as depicted in 2008 – 2016.

CHART SERIES:

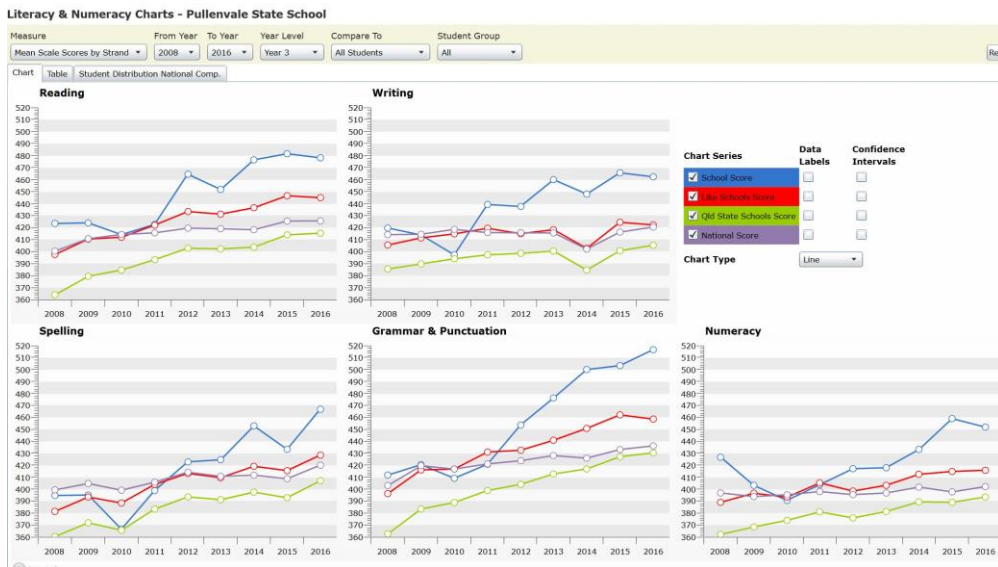
BLUE: Pullenvale State School Score

RED: 'Like' Schools Score

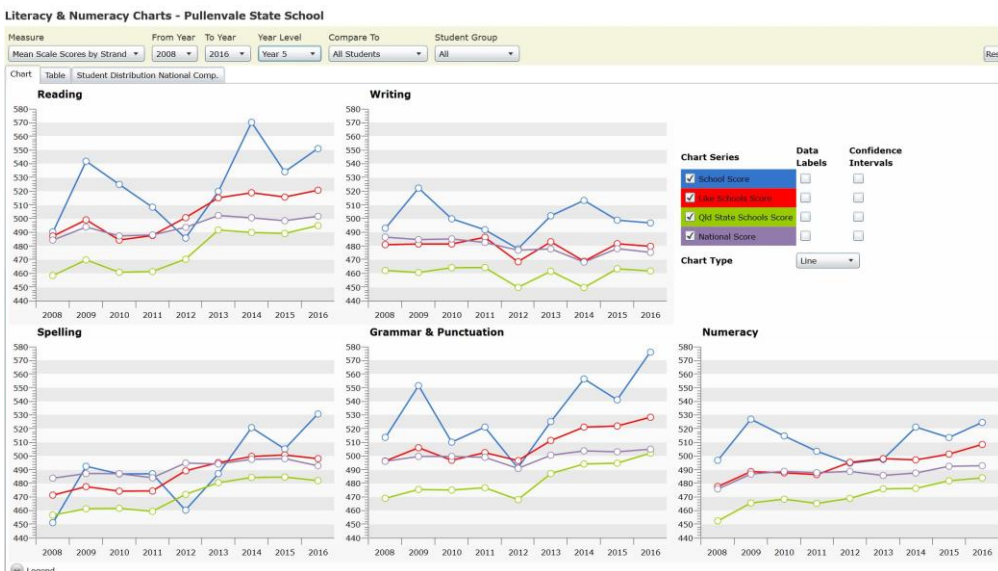
GREEN: QLD State Schools Score

PURPLE: National Score

YEAR 3 RESULTS: MEAN SCALE SCORE 2008 – 2016:



YEAR 5 RESULTS: MEAN SCALE SCORE 2008 – 2016:



Principal Summary:

The data presented above is preliminary only, however, historically little margin or error has been expressed from **preliminary** to **final** data sets. As final data is released I will be able to share with you much more evidence, comparatively.

The school's performance data is outstanding and a reason for celebration for all members of the school, community and beyond. In particular, the Reading and Grammar and Punctuation results for both year levels are exceptional with a special mention also needed for Year 3 Writing.

The time teachers spend to provide outstanding opportunities for your child/ren and our students is exemplary. Teachers at Pullenvale go above and beyond on a daily basis, setting themselves and students high but achievable goals for success and growth.

For this, I thank all of our staff, from teachers, administrators, cleaners, teacher aides, grounds person, ancillary staff and our supportive and engaged community.

You will hear me say frequently at assembly a student who is 'Safe, Healthy and Well, is a student ready to learn'. Therefore, I thank our wonderful community for the daily effort which goes into preparing your child to be ready to become a student of the 21st century.

Thank you for taking the time to reflect on these results and I encourage you to share in congratulating and celebrating these results with our staff, who as always, acknowledge and prepare for the next day!

Proud to be Pullenvale

Yours Sincerely

Sam Symes

Principal